

## OVERCOAT

Tailor name \_\_\_\_\_

Order code \_\_\_ / \_\_\_ / \_\_\_

Client name \_\_\_\_\_

Date \_\_\_ / \_\_\_ / \_\_\_

Before filling in the form, go to page 2 and check the alterations you can have done.

**CHEST**

+  -  cm  cm  in

**SHOULDERS**

+  -  cm  cm  in

**ARMHOLE**

+  -  cm  cm  in

**WAIST**

+  -  cm  cm  in

**SLEEVE LENGTH**

+  -  cm  cm  in

**COLLAR CREASE**

+  -  cm  cm  in

**COLLAR**

+  -  cm  cm  in

**CANNELLI**

+  -  cm  cm  in

**OVERCOAT HIPS**

+  -  cm  cm  in

**SLEEVE WIDTH**

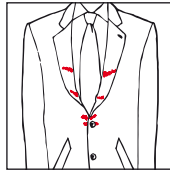
+  -  cm  cm  in

**OVERCOAT LENGTH**

+  -  cm  cm  in

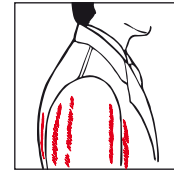
**Possible alterations list and visible flaws highlighted.****1 SHOULDERS:**

You can take up to **2 cm (3/4 in)** out of each side to narrow the shoulders.

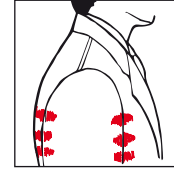
**2 CHEST:**

You can take up to **3 cm (1 1/8 in)** out of the chest area - **1.5 cm (5/8 in)** out of each side -, to reduce it.

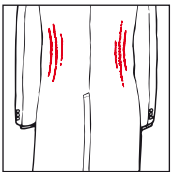
You can add **1.5 cm (5/8 in)** to the back centre seam to increase the chest area.

**3 ARMHOLE:**

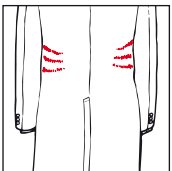
You can take up to **2 cm (3/4 in)** out of the armhole to reduce it.



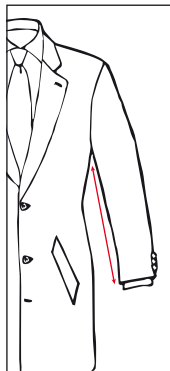
You can add **2 cm (3/4 in)** to the armhole to increase it.

**4 WAIST:**

You can take up to **5 cm (2 in)** out of the overcoat waist - **3 cm (1 1/8 in)** out of the hips and **2 cm (3/4 in)** out of the back centre seam -, to reduce it.

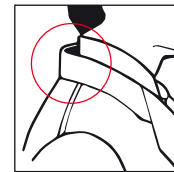


You can add up to **5 cm (2 in)** to the overcoat waist to increase it.

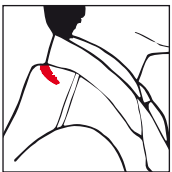
**5 SLEEVE LENGTH:**

You can add up to **1.5 cm (5/8 in)** to the sleeve to lengthen it. You can take up to **1.5 cm (5/8 in)** out of the sleeve to shorten it starting from the wrist.

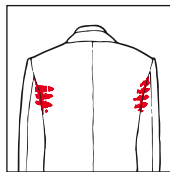
For more drastic reductions please contact our Customer Care.

**6 COLLAR:**

You can take up to **2 cm (3/4 in)** out of the collar semi-circumference of the overcoat to reduce it.

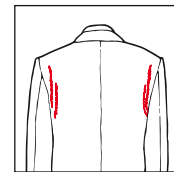
**7 COLLAR CREASE:**

You can take **1 cm (3/8 in)** or **2 cm (3/4 in)** out of the collar crease to reduce it.

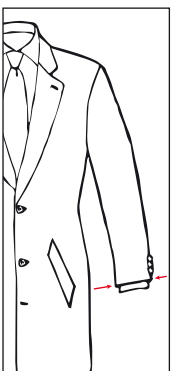
**8 CANNELLI:**

Excess fabric in the lower part of the shoulders area ("Cannelli") is conceived to allow better mobility.

You can take up to **1.5 cm (5/8 in)** out of each side to reduce the "cannelli".

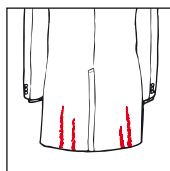


You can add **1 cm (3/8 in)** to each side to increase them.

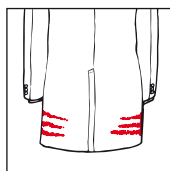
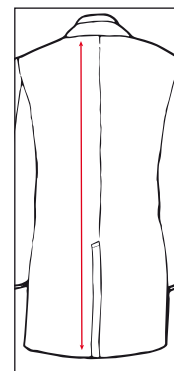
**9 SLEEVE WIDTH:**

You can take up to **2 cm (3/4 in)** out of the sleeve width to reduce it.

You can add **1 cm (3/8 in)** to the sleeve width to increase it.

**10 OVERCOAT HIPS:**

You can take up to **6 cm (2 3/8 in)** out of the overcoat hips diameter to reduce it - **2 cm (3/4 in)** out of each hip and **2 cm (3/4 in)** out of the back centre seam.

**11 OVERCOAT LENGTH:**

You can take up to **3 cm (1 1/8 in)** out of the overcoat to shorten it.

The overcoat can't be lengthened.