

JACKET / BLAZER

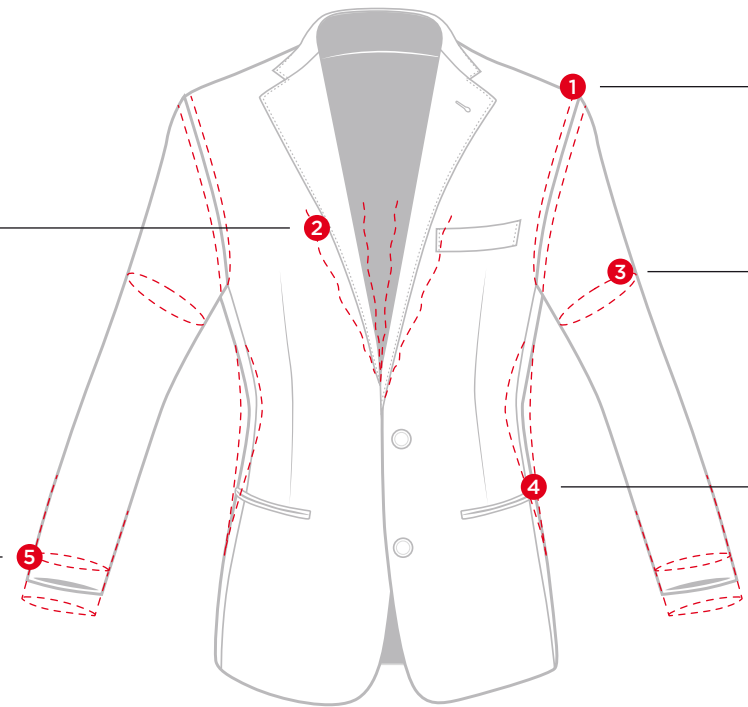
Tailor name _____

Order code ___ / ___ / ___

Client name _____

Date ___ / ___ / ___

Before filling in the form, go to page 2 and check the alterations you can have done.



CHEST

+ - cm in

SLEEVE LENGTH

+ - cm in

SHOULDERS

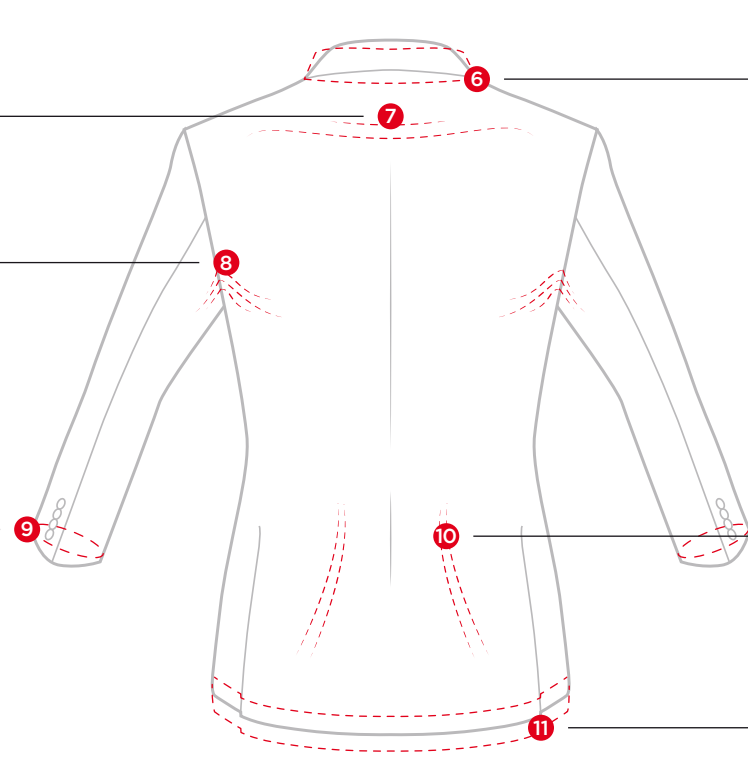
+ - cm in

ARMHOLE

+ - cm in

WAIST

+ - cm in



COLLAR CREASE

+ - cm in

CANNELLI

+ - cm in

SLEEVE WIDTH

+ - cm in

COLLAR

+ - cm in

JACKET HIPS

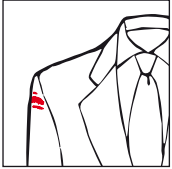
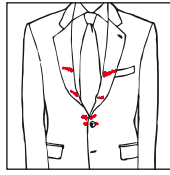
+ - cm in

JACKET LENGTH

+ - cm in

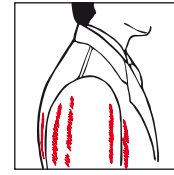
Possible alterations list and visible flaws highlighted.**1 SHOULDERS:**

You can take up to **2 cm (3/4 in)** out of each side to narrow the shoulders.

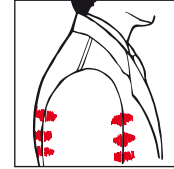
**2 CHEST:**

You can take up to **3 cm (1 1/8 in)** out of the chest area - **1.5 cm (5/8 in)** out of each side -, to reduce it.

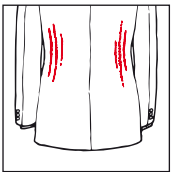
You can add **1.5 cm (5/8 in)** to the back centre seam to increase the chest area.

3 ARMHOLE:

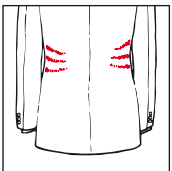
You can take up to **2 cm (3/4 in)** out of the armhole to reduce it.



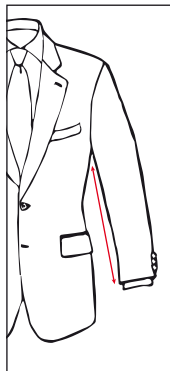
You can add **2 cm (3/4 in)** to the armhole to increase it.

4 WAIST:

You can take up to **5 cm (2 in)** out of the jacket waist - **3 cm (1 1/8 in)** out of the hips and **2 cm (3/4 in)** out of the back centre seam -, to reduce it.

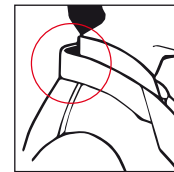


You can add up to **5 cm (2 in)** to the jacket waist to increase it.

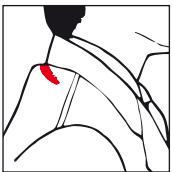
5 SLEEVE LENGTH:

You can add up to **1.5 cm (5/8 in)** to the sleeve to lengthen it. You can take up to **1.5 cm (5/8 in)** out of the sleeve to shorten it starting from the wrist.

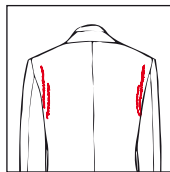
For more drastic reductions please contact our Customer Care.

6 COLLAR:

You can take up to **2 cm (3/4 in)** out of the collar semi-circumference of the jacket to reduce it.

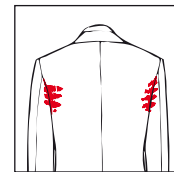
7 COLLAR CREASE:

You can take **1 cm (3/8 in)** or **2 cm (3/4 in)** out of the collar crease to reduce it.

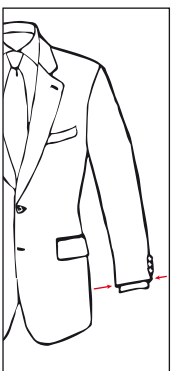
8 CANNELLI:

Excess fabric in the lower part of the shoulders area ("Cannelli") is conceived to allow better mobility.

You can take up to **1.5 cm (5/8 in)** out of each side to reduce the "cannelli".

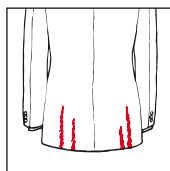


You can add **1 cm (3/8 in)** to each side to increase them.

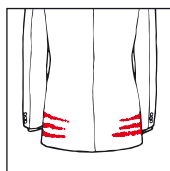
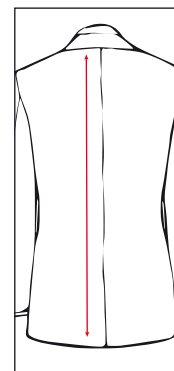
9 SLEEVE WIDTH:

You can take up to **2 cm (3/4 in)** out of the sleeve width to reduce it.

You can add **1 cm (3/8 in)** to the sleeve width to increase it.

10 JACKET HIPS:

You can take up to **6 cm (2 3/8 in)** out of the jacket hips diameter to reduce it - **2 cm (3/4 in)** out of each hip and **2 cm (3/4 in)** out of the back centre seam.

**11 JACKET LENGTH:**

You can take up to **3 cm (1 1/8 in)** out of the jacket to shorten it.

The jacket can't be lengthened.